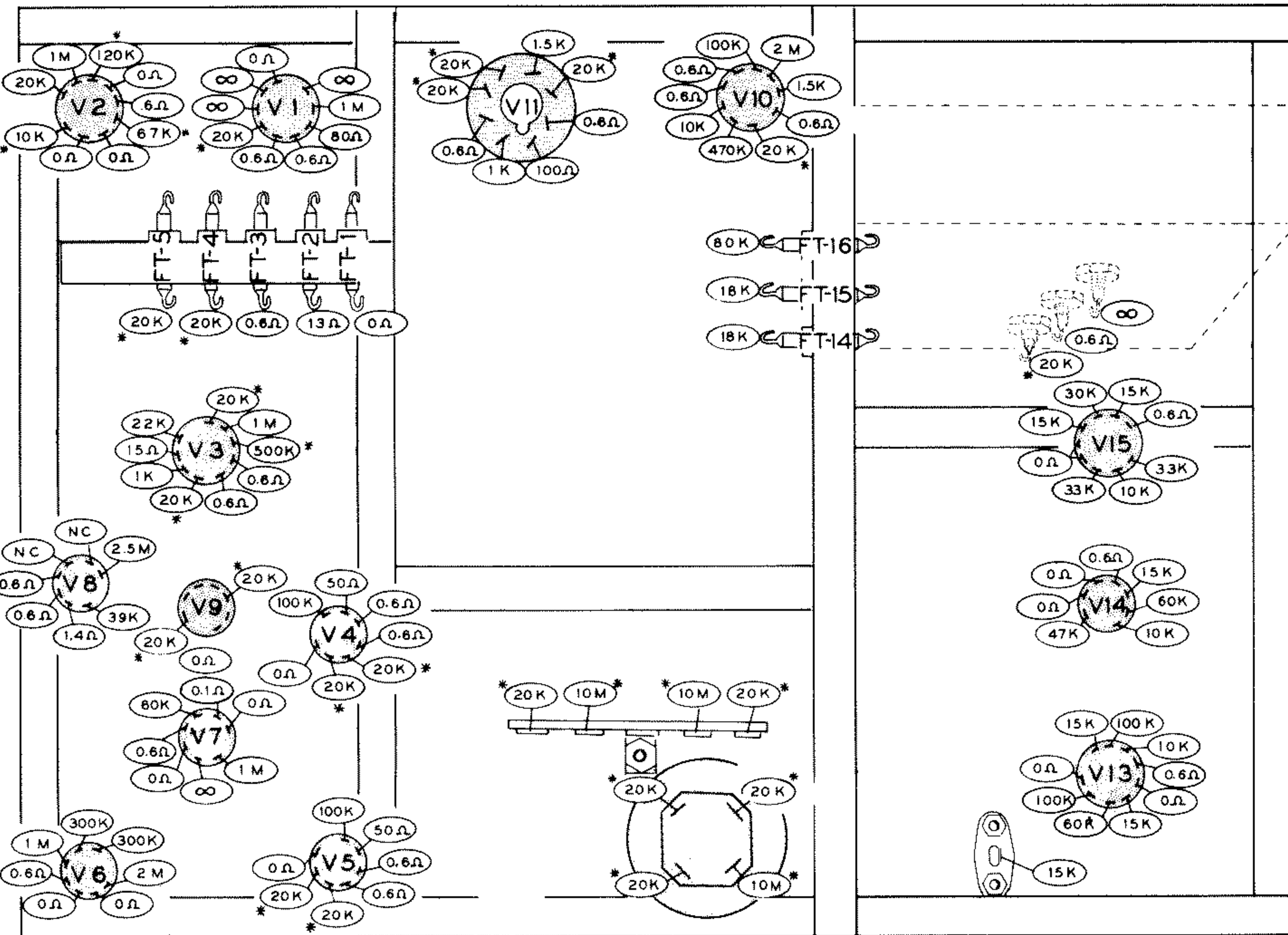


RESISTANCE CHART



CONTROLS ARE SET AS FOLLOWS:

AVC : OFF
 RF GAIN : FULL CW
 BFO/PITCH : PUSHED IN AND FULL CCW
 ANL/SQUELCH : PUSHED IN AND FULL CCW
 FINAL TUNE : FULL CCW
 SPOT : OFF
 CW-AM : AM
 AUDIO : POWER OFF
 X2-X3-X4-VFO : X4
 RCVR TUNE : DIAL POINTER SET AT 50 MC
 TRANS. TUNE : DIAL POINTER SET AT 50 MC
 COUPLING : FULL CCW

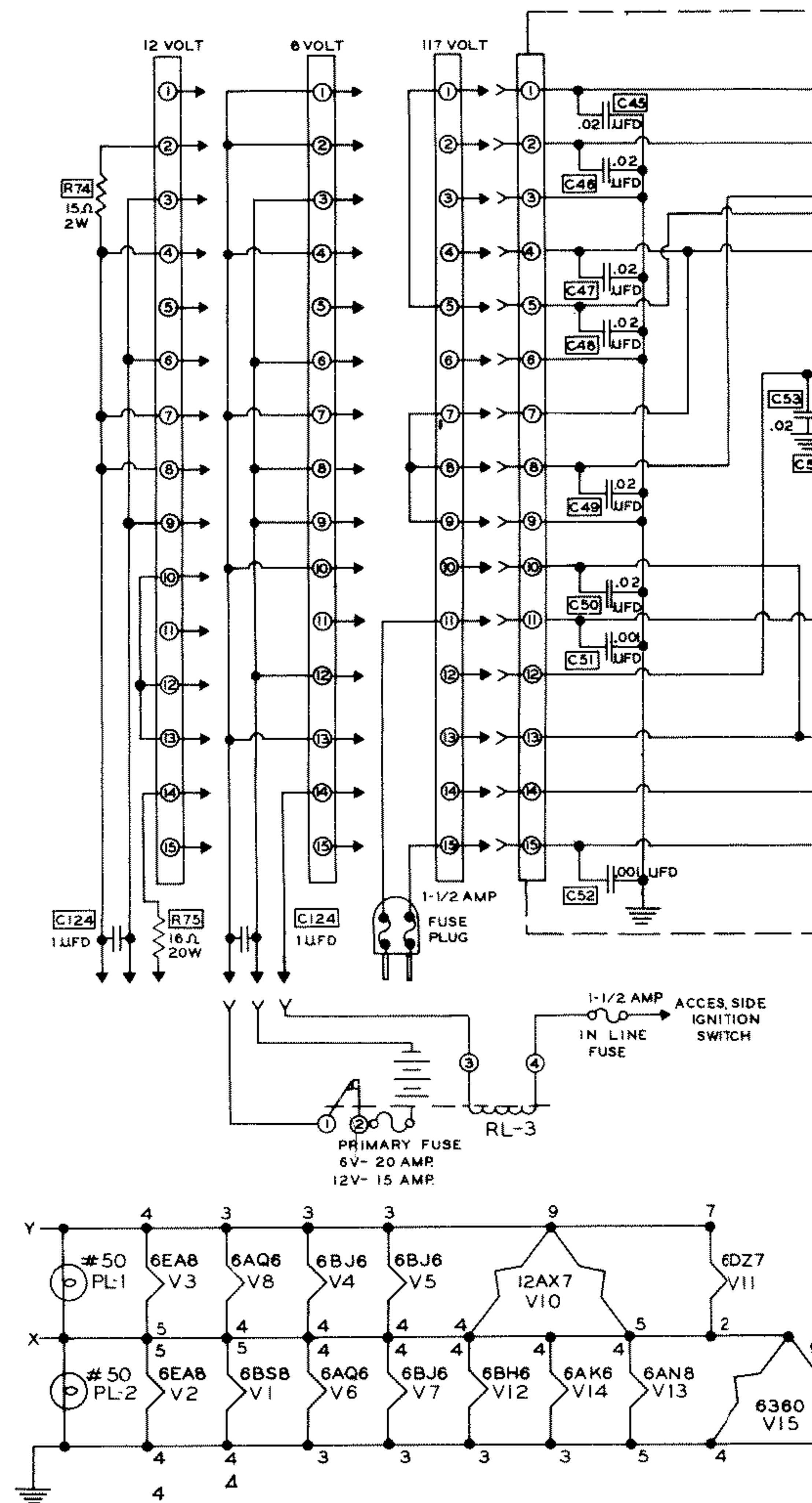
LOADING : CAPACITOR PLATES FULL MESHED
 MOD. LEVEL : PUSHED IN AND FULL CCW
 MOD. MONITOR : OFF
 POWER CORD DISCONNECTED

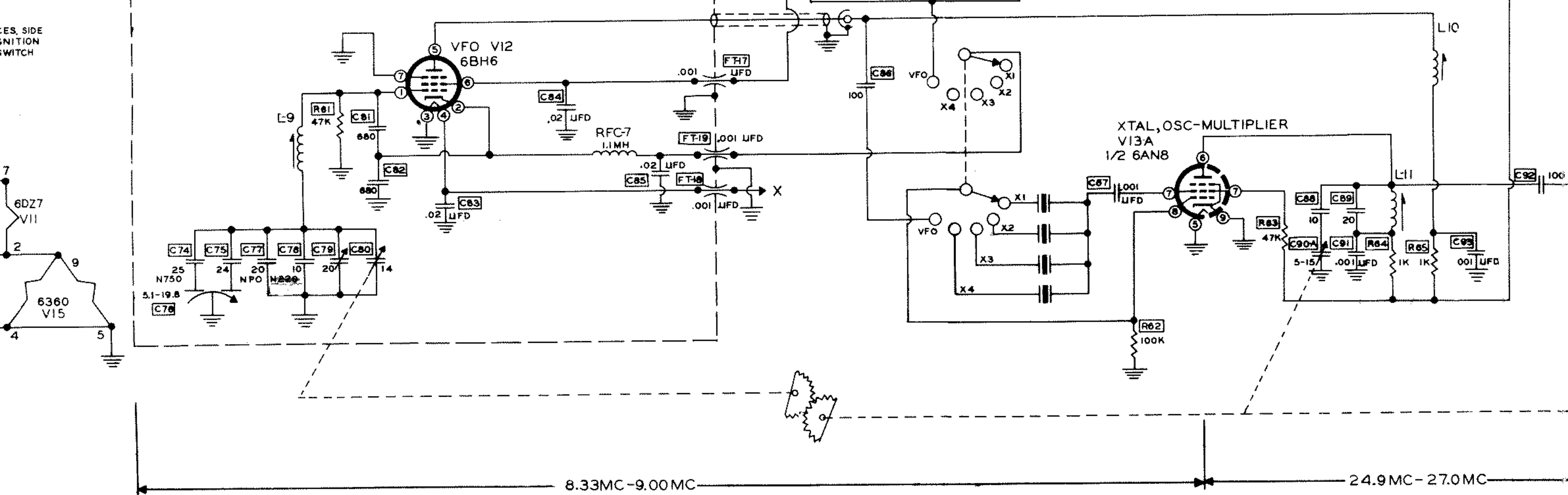
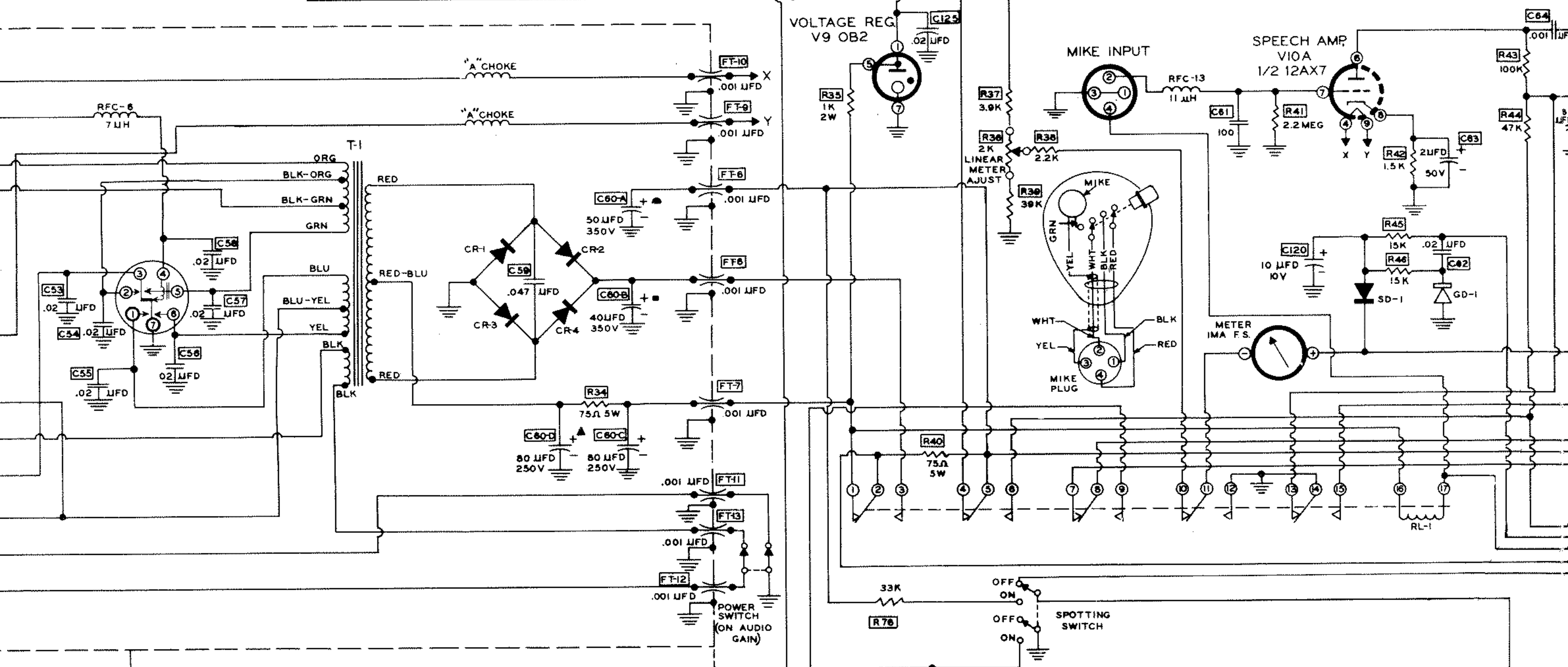
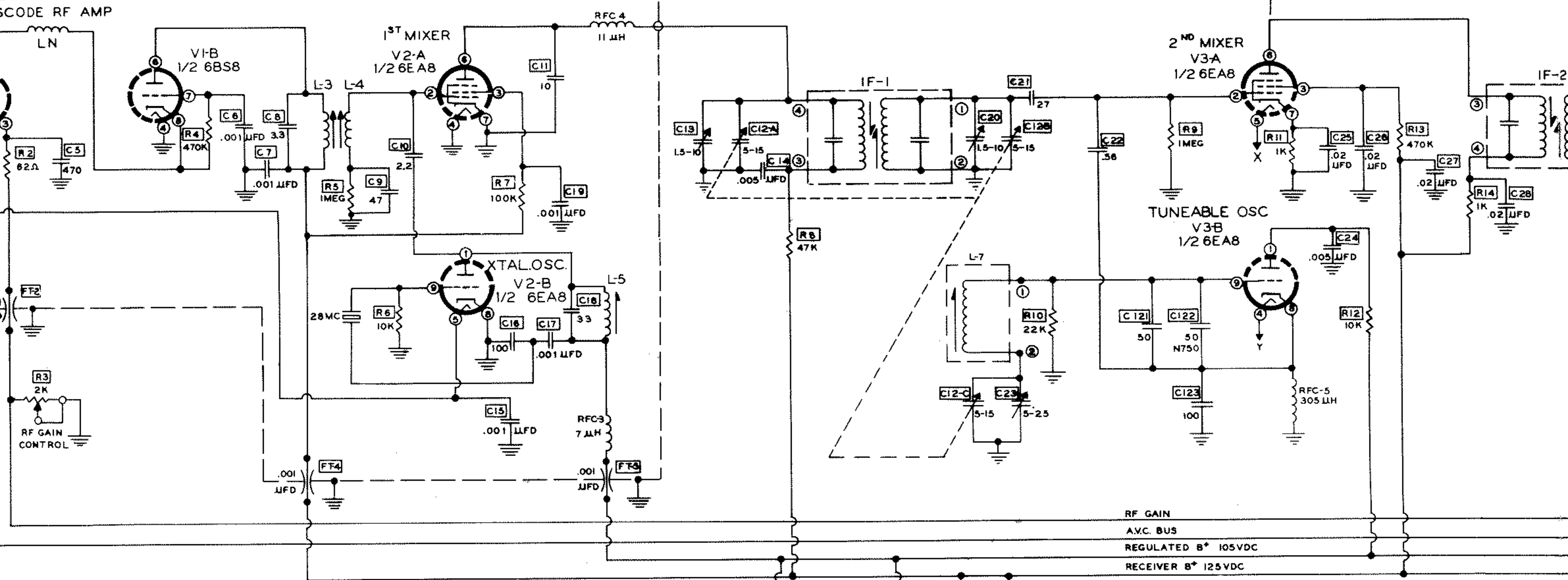
**IF READING IS ABNORMALLY LOW - REVERSE METER PROBES.

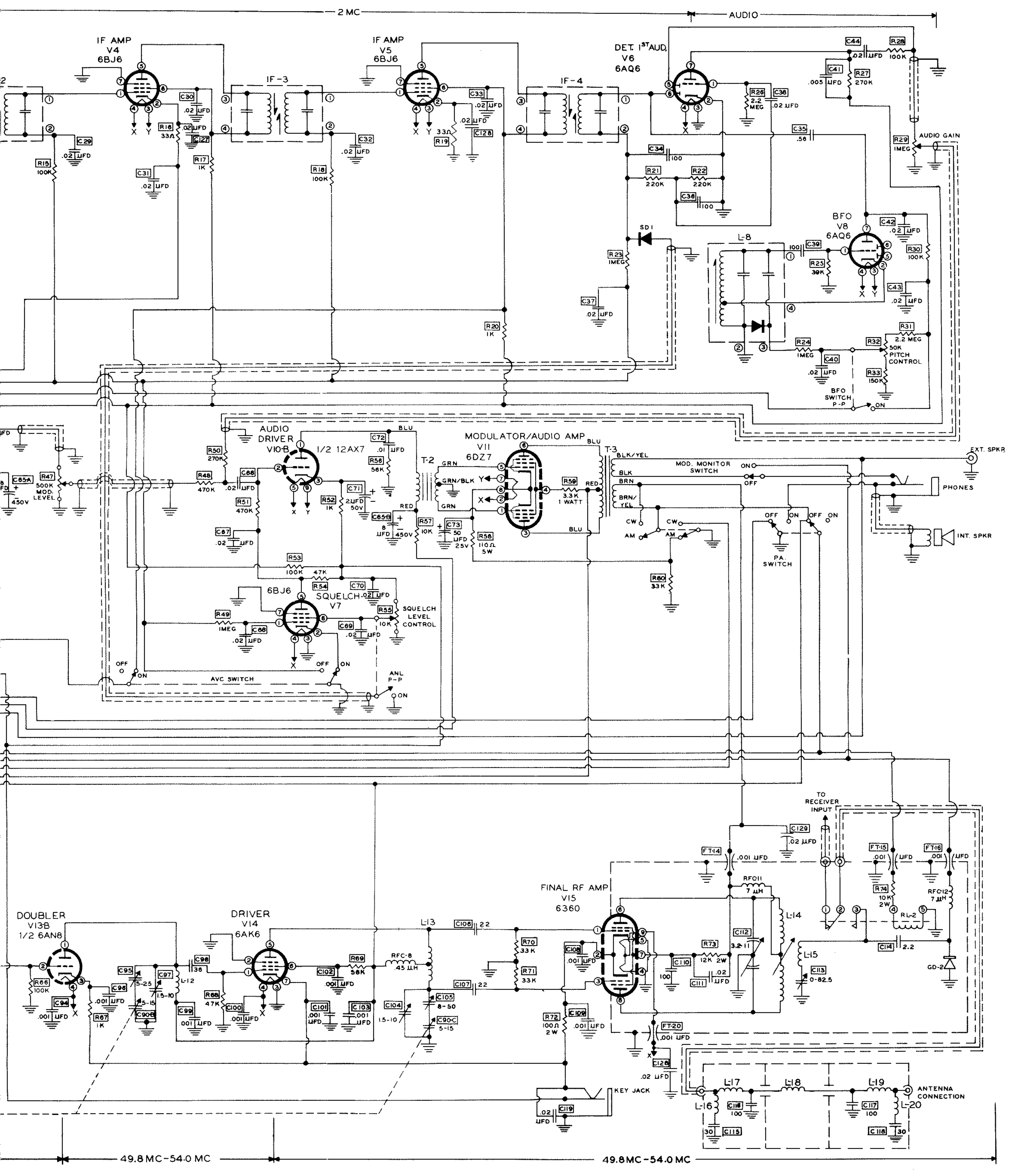
M = Meg
 K = 1,000
 * MINIMUM READING AFTER 5 SECONDS.
 WITH ALL TUBES IN SOCKETS.

SHAWNEE MODEL HW-10

ALL RESISTORS ARE 1/2 WATT UNLESS OTHERWISE SPECIFIED.
 ALL CAPACITOR VALUES ARE IN μf UNLESS SHOWN OTHERWISE.
 CAPACITORS DESIGNATED WITH FT ARE FEED-THROUGH TYPE.
 RELAYS RL1 AND RL2 ARE SHOWN IN RECEIVE CONDITION.
 XTAL-VFO SWITCH SHOWN IN VFO POSITION.
 POWER SWITCH SHOWN IN ON POSITION.
 CW-AM SWITCH SHOWN IN AM POSITION.
 P.A. SWITCH SHOWN IN OFF POSITION.
 MODULATION MONITOR SWITCH SHOWN IN OFF POSITION.
 SPOT SWITCH SHOWN IN OFF POSITION.
 AVC SWITCH SHOWN IN ON POSITION.







K4XL's **BAMA**

This manual is provided **FREE OF CHARGE** from the “BoatAnchor Manual Archive” as a service to the Boatanchor community.

It was uploaded by someone who wanted to help you repair and maintain your equipment.

If you paid anyone other than BAMA for this manual, you paid someone who is making a profit from the free labor of others without asking their permission.

You may pass on copies of this manual to anyone who needs it. But do it without charge.

Thousands of files are available without charge from BAMA. Visit us at <http://bama.sbc.edu>